

# Energise sit-stand workstation

## The sit-stand workstation designed for radiologists



## Features

A height-adjustable workstation designed to meet the needs of hospital departments, Energise combines simple sit-stand operation with ergonomic features to improve comfort, health, and productivity.

- ✓ Smooth, electronic height adjustment at the touch of a button.
- ✓ Fully adjustable display mounts for optimal viewing distance, height, tilt, and rotation.
- ✓ Privacy boards reduce distractions, noise, and glare for improved focus.
- ✓ Large, durable work surface available in three standard sizes and a range of colours.
- ✓ Integrated cable management keeps cables secure, tidy, and accessible, including 4 power sockets for monitors and a PC.
- ✓ Anti-collision technology prevents accidental damage to the workstation or nearby equipment.

## Benefits

- Sit-stand working helps reduce musculoskeletal problems and improves long-term health, potentially lowering staff sickness rates.
- Meets The Royal College of Radiologists' ergonomic recommendations for optimal reporting environments.
- Boosts productivity and concentration by enabling posture changes throughout the day.
- Quiet, low-power motorised adjustment with memory control options for personalised desk positions.
- Durable, hygienic work surface resistant to hospital cleaning agents.
- Solid steel legs and frame provide long-term stability and reliability.
- Optional ambient lighting reduces eye strain and improves reporting accuracy.
- Available accessories include printer shelves, PC shelves, USB/wireless charging, ergonomic seating, and specialist displays from Barco and EIZO.

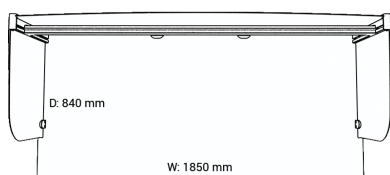


As a partner for Barco and EIZO, the UK's leading medical display manufacturers, we can supply their monitors alongside our sit-stand workstations. Our Professional Services team can install the desk and mount the displays, but we can add further value by providing and fitting a range of specialist tools to optimise workflows and comfort, including:

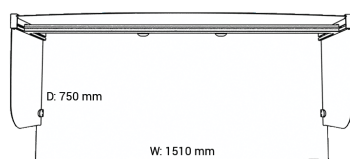
- Pathology/Radiology-specific graphics cards for precise image rendering
- Ambient lighting solutions to reduce eye strain and maintain image consistency
- Professional dictation devices, colourimeters and workflow-specific controls
- Infection control peripherals such as keyboards, mice and smartcard readers for labs and other high contamination risk areas

## Available in

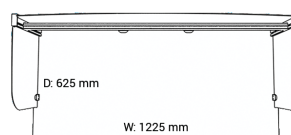
### Sizes



Large (185 cm)

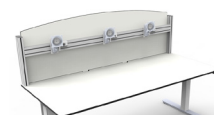


Medium (151 cm)

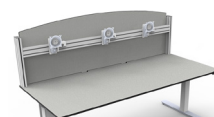


Small (122.5 cm)

### Colours



White

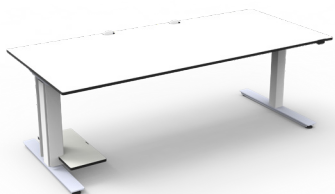


Grey

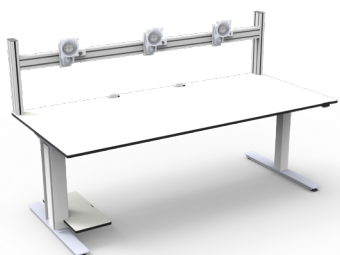
# Energise sit-stand workstation

## The sit-stand workstation designed for radiologists

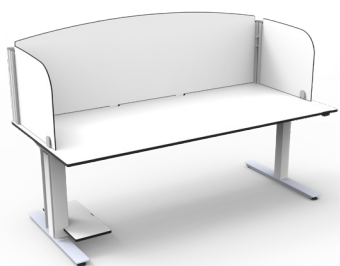
### Configuration examples



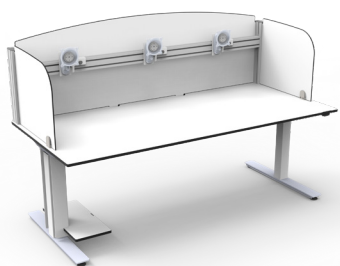
Basic - no monitor-mounting rail or privacy boards



With monitor-mounting rail



With privacy boards



With monitor-mounting rail and privacy boards

### Main specifications

Maximum height	1292 mm
Minimum height	647 mm
Height adjustment range	645 mm
Height adjustment speed	40 mm/s
Work surface dimensions (mm)	Large: 840 (D) x 1850 (W) x 16 (H) Medium: 750 (D) x 1510 (W) x 16 (H) Small: 625 (D) x 1225 (W) x 16 (H)
Maximum load	120 kg
Sockets (for monitors, PC, etc)	4 x 10A IEC 60320 C13
PC shelf dimensions (mm)	500 (D) x 190 (W) (PCs up to 475mm tall)

### Optional extras



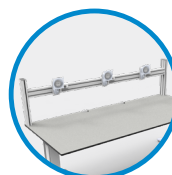
Specialist and cleanable monitors



Ambient lighting solutions



Ergonomic seating



Monitor-mounting rail



PC shelf



Privacy boards



Cleanable peripherals



Dictation devices and software



DICOM calibration tools

### The Parity Medical difference



Device configuration



Phased delivery



Instant support



Direct purchase



Made in the UK



Project management

Version 1.1

